



UL Standard Electrical Conduit and Fittings

Schedule 40 and Schedule 80 PVC Conduit and Fittings, Type EB and Type A
PVC Conduit PVC Utilities Duct, Electrical Nonmetallic Conduit and Fittings.

Head Office

TAIWAN CTUBE PIPE INDUSTRY TECHNOLOGY CO.LTD

- ☎ Service Hotline: 400-992-3828
- 🌐 <https://www.ctube-gr.com/>
- ✉ Email: info@c-tube.net

Ctube Marketing Sales Centre

- 📍 Room 5606, Building 18 of Dongjiang Zhixing, No. 8 Hongfu West Road, Wanjiang District, Dongguan City, Guangdong Province, China
- ☎ +86-769-8120071
- 📞 +86 15817718199
- ✉ info@c-tube.net

Factory Centre A

GUANGDONG CTUBE INDUSTRY CO.LTD

- 📍 A.B.C Zone, ChenTang NiNiu Industry JiaoLi Village ZhongTang Town Dongguan City China.
- ☎ +86-769-81200072
- 📞 +86-769-81200075
- ✉ info@c-tube.net

Factory Centre B

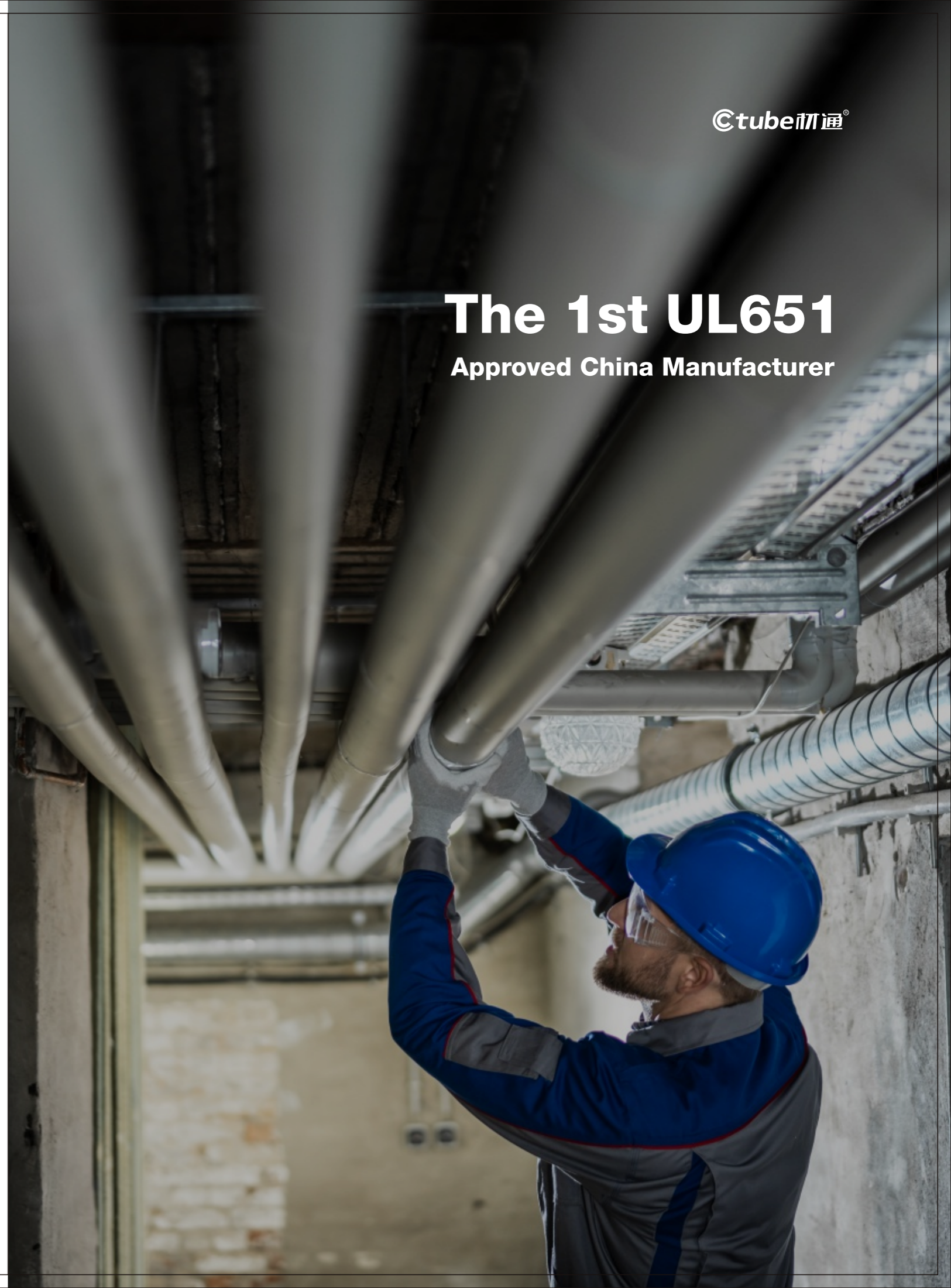
CTUBE(LECHANG)PIPE INDUSTRY TECHNOLOGY CO.LTD

- 📍 No. 12, Huanyuan East Road, Lechang Industrial Transfer Industrial Park, Lechang City, Shaoguan City, China
- ☎ 0751-5583311
- 📞 0751-5583399.
- ✉ info@c-tube.net



The 1st UL651

Approved China Manufacturer





ABOUT US

We are the leading and professional PVC conduit and fittings manufacturer in China, specializing in the development and production of innovative PVC conduits and fittings for cable management and protection.

Our main products include: UL Listed PVC conduit and fittings, CSA certified PVC conduit and fittings, AS/NZS 2053 conduit and fittings, IEC conduit and fittings, solar conduit & fittings, halogen-free conduit and fittings, with UL, CSA, AS/NZS 2053, IEC, CE, ROHS and etc.

Global customization, leading to the future. Ctube is committed to innovation and development of green products. Contributing the "Ctube Power" to promote the sustainable development of the electrical conduit industry and creating a better life for humanity.



Schedule 40 and Schedule 80 PVC Conduit and Fittings,
Type EB and Type A PVC Conduit,
DB120 PVC Utilities Duct,
Electrical Nonmetallic Conduit and Fittings.



Schedule 40 Rigid PVC Conduit

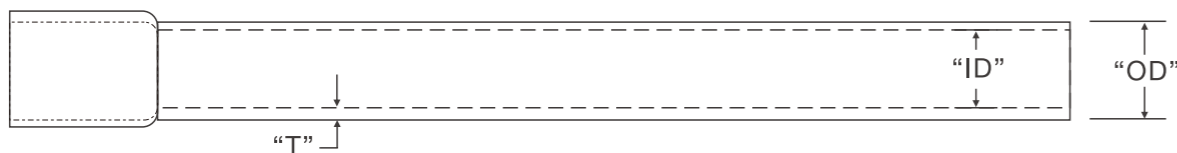
From the outset when the company was formed, Ctube aims to provide excellent electrical conduit & fittings. Ctube Schedule 40 rigid PVC conduit meets and exceeds quality standards.

- PVC material test: ASTM D1784-20.
- In accordance with UL651, CSA, NEMA TC 2 Standard.
- PVC material which is corrosion resistant.
- Impact resistant.
- Sunlight resistant.
- Self extinguishing, fire resistant.
- Smooth interior and outside.
- Suitable for underground or above ground applications.
- Standard lengths 10 feet and 20 feet with a belled end or not. Other lengths can be customized for specific applications.



Item No.	Size	OD		Min Average ID		Min T	
		Average		Schedule 40		Schedule 40	
		Inches	mm	Inches	mm	Inches	mm
CT-SCH40A	1/2	0.840±0.004	21.34±0.10	0.578	14.68	0.109	2.77
CT-SCH40B	3/4	1.050±0.004	26.67±0.10	0.780	19.81	0.113	2.87
CT-SCH40C	1	1.315±0.005	33.40±0.13	1.004	25.50	0.133	3.38
CT-SCH40D	1-1/4	1.660±0.005	42.16±0.13	1.335	33.90	0.140	3.56
CT-SCH40E	1-1/2	1.900±0.006	48.26±0.15	1.564	39.72	0.145	3.68
CT-SCH40F	2	2.375±0.006	60.32±0.15	2.021	51.33	0.154	3.91
CT-SCH40G	2-1/2	2.875±0.007	73.02±0.18	2.414	61.31	0.203	5.16
CT-SCH40H	3	3.500±0.008	88.90±0.20	3.008	76.40	0.216	5.49
CT-SCH40I	3-1/2	4.000±0.008	101.60±0.20	3.486	88.54	0.226	5.74
CT-SCH40J	4	4.500±0.009	114.30±0.23	3.961	100.60	0.237	6.02
CT-SCH40K	5	5.563±0.010	141.30±0.25	4.975	126.36	0.258	6.55
CT-SCH40L	6	6.625±0.011	168.28±0.28	5.986	152.04	0.280	7.11
CT-SCH40M	8	8.625±0.011	219.07±0.28	7.853	199.47	0.322	8.18

Dimensions are nominal



Schedule 80 Rigid PVC Conduit

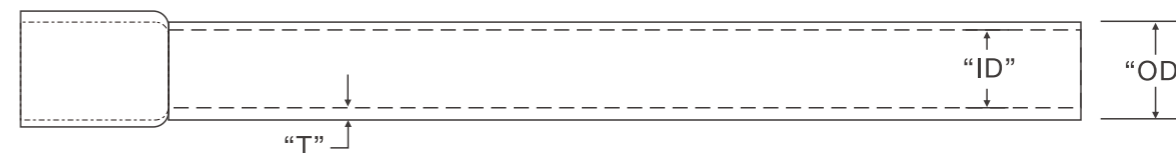
Ctube Schedule 80 Rigid PVC conduit is designed for use wherever Schedule 40 rigid PVC conduit may be used and are for installation on poles.

- PVC material test: ASTM D1784-20.
- In accordance with UL651, CSA, NEMA TC 2 Standard.
- PVC material which is corrosion resistant.
- Impact resistant.
- Sunlight resistant.
- Self extinguishing, fire resistant.
- Smooth interior and outside.
- Suitable for underground or above ground applications.
- Standard lengths 10 feet and 20 feet with a belled end or not. Other lengths can be customized for specific applications.



Item No.	Size	OD		Min Average ID		Min T	
		Average		Schedule 80		Schedule 80	
		Inches	mm	Inches	mm	Inches	mm
CT-SCH80A	1/2	0.840±0.004	21.34±0.10	0.502	12.75	0.147	3.73
CT-SCH80B	3/4	1.050±0.004	26.67±0.10	0.698	17.72	0.154	3.91
CT-SCH80C	1	1.315±0.005	33.40±0.13	0.910	23.11	0.179	4.55
CT-SCH80D	1-1/4	1.660±0.005	42.16±0.13	1.227	31.16	0.191	4.85
CT-SCH80E	1-1/2	1.900±0.006	48.26±0.15	1.446	36.72	0.200	5.08
CT-SCH80F	2	2.375±0.006	60.32±0.15	1.881	47.77	0.218	5.54
CT-SCH80G	2-1/2	2.875±0.007	73.02±0.18	2.250	57.15	0.276	7.01
CT-SCH80H	3	3.500±0.008	88.90±0.20	2.820	71.62	0.300	7.62
CT-SCH80I	3-1/2	4.000±0.008	101.60±0.20	3.280	83.31	0.318	8.08
CT-SCH80J	4	4.500±0.009	114.30±0.23	3.737	94.91	0.337	8.56
CT-SCH80K	5	5.563±0.010	141.30±0.25	4.713	119.71	0.375	9.53
CT-SCH80L	6	6.625±0.011	168.28±0.28	5.646	143.41	0.432	10.97
CT-SCH80M	8	8.625±0.011	219.07±0.28	7.513	190.83	0.500	12.70

Dimensions are nominal





TYPE A Rigid PVC Conduit

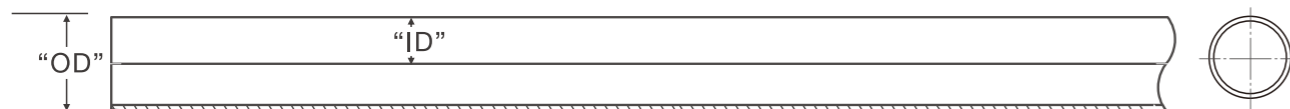
Ctube Type A rigid PVC conduit is designed for use with 75°C wiring. And where encased in concrete in trenches outside of buildings, be used with 90°C wiring.

- PVC material test: ASTM D1784-20.
- PVC material which is corrosion resistant.
- Impact resistant.
- Self extinguishing, fire resistant.
- Smooth interior and outside.
- Suitable for underground or above ground applications.
- Standard lengths 10 feet and 20 feet with a belled end or not. Other lengths can be customized for specific applications.



Item No.	Size	OD		Wall Thickness			
		Average		Max.		Min.	
		Inches	mm	Inches	mm	Inches	mm
CT-TYPEAA	1/2	0.840 ±0.004	21.34 ±0.10	0.080	2.030	0.060	1.520
CT-TYPEAB	3/4	1.050 ±0.004	26.67 ±0.10	0.080	2.030	0.060	1.520
CT-TYPEAC	1	1.315 ±0.005	33.40±0.13	0.080	2.030	0.060	1.520
CT-TYPEAD	1-1/4	1.660 ±0.005	42.16 ±0.13	0.090	2.290	0.070	1.780
CT-TYPEAE	1-1/2	1.900 ±0.006	48.26 ±0.15	0.100	2.540	0.080	2.030
CT-TYPEAF	2	2.375 ±0.006	60.32 ±0.15	0.120	3.050	0.100	2.540
CT-TYPEAG	2-1/2	2.875 ±0.007	73.02 ±0.18	0.130	3.300	0.110	2.800
CT-TYPEAH	3	3.500 ±0.008	88.90 ±0.20	0.145	3.680	0.125	3.180
CT-TYPEAI	3-1/2	4.000±0.008	101.60 ±0.20	0.165	4.200	0.145	3.680
CT-TYPEAJ	4	4.500±0.009	114.30 ±0.23	0.170	4.320	0.150	3.800
CT-TYPEAK	5	5.563±0.010	141.30 ±0.25	0.190	4.826	0.170	4.318
CT-TYPEAL	6	6.625±0.011	168.28 ±0.28	0.210	5.334	0.190	4.826

Dimensions are nominal



TYPE EB Rigid PVC Conduit

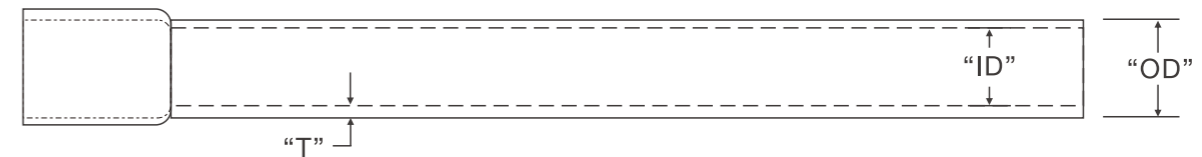
Ctube Type EB rigid PVC conduit is designed for use in concrete encased installations. Type EB is used with 90°C wiring.

- PVC material test: ASTM D1784-20.
- PVC material which is corrosion resistant.
- Impact resistant.
- Self extinguishing, fire resistant.
- Smooth interior and outside.
- Produced in standard 20' Lengths or 10' lengths with a belled end.



Item No.	Size	OD		Wall Thickness			
		Average		Max.		Min.	
		Inches	mm	Inches	mm	Inches	mm
CT-TYPEEBA	2	2.375±0.006	60.32±0.15	0.094	2.39	0.060	1.52
CT-TYPEEBB	3	3.500±0.008	88.90±0.20	0.109	2.77	0.061	1.55
CT-TYPEEBC	3-1/2	4.000±0.008	101.60±0.20	0.124	3.15	0.072	1.83
CT-TYPEEBD	4	4.500±0.009	114.30±0.23	0.129	3.28	0.082	2.08
CT-TYPEEBE	5	5.563±0.010	141.30±0.25	0.144	3.66	0.103	2.62
CT-TYPEEBF	6	6.625±0.011	168.28±0.28	0.164	4.17	0.125	3.18

Dimensions are nominal



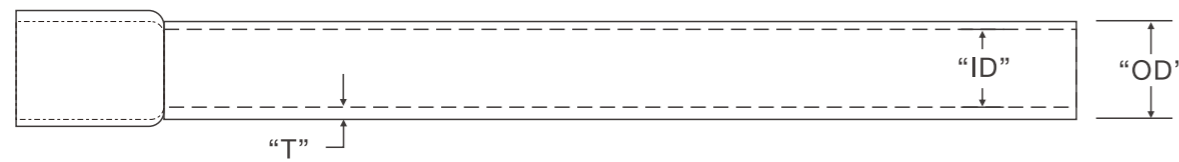
DB-60 Direct Burial Utility Duct



- In accordance with NEMA TC 6&8, ASTM F-512 Standard.
- Intended for installation underground for communications and electrical wire and cable, suitable for direct burial without encasement in concrete.
- Corrosion resistant.
- Impact resistant.
- Self extinguishing, fire resistant.
- Smooth interior and outside.
- Produced in standard 10' or 20' lengths with a belled end.

Item No.	Trade Size	Average OD	Min Thickness	Length
		(Inch)	(Inch)	
CT-DB6001	2	2.375 ±0.006	0.060	10ft/20ft
CT-DB6002	3	3.500 ±0.008	0.092	10ft/20ft
CT-DB6003	4	4.500±0.009	0.121	10ft/20ft
CT-DB6004	5	5.563±0.010	0.152	10ft/20ft
CT-DB6005	6	6.625±0.011	0.182	10ft/20ft

Dimensions are nominal



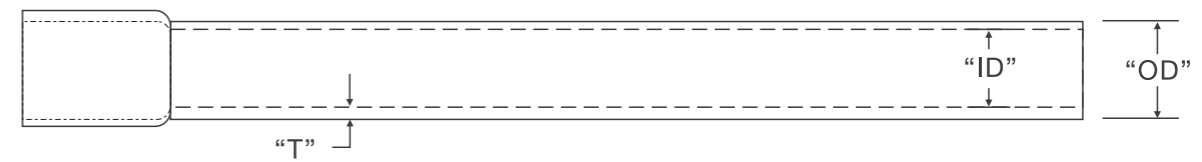
DB-100 Direct Burial Utility Duct



- In accordance with NEMA TC 6&8, ASTM F-512 Standard.
- Intended for installation underground for communications and electrical wire and cable, suitable for direct burial without encasement in concrete.
- Corrosion resistant.
- Impact resistant.
- Self extinguishing, fire resistant.
- Smooth interior and outside.
- Produced in standard 10' or 20' lengths with a belled end.

Item No.	Trade Size	Average OD	Min Thickness	Length
		(Inch)	(Inch)	
CT-DB10001	3	3.500 ±0.008	0.112	10ft/20ft
CT-DB10002	3-1/2	4.000±0.008	0.128	10ft/20ft
CT-DB10003	4	4.500±0.009	0.145	10ft/20ft
CT-DB10004	5	5.563±0.010	0.179	10ft/20ft
CT-DB10005	6	6.625±0.011	0.213	10ft/20ft

Dimensions are nominal





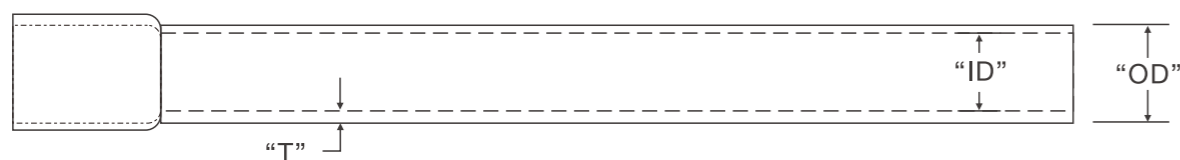
DB120 PVC Utilites Duct

ctube DB120 rigid PVC conduit is intended for installation underground for communications and electrical wire and cable, suitable for direct burial without encasement in concrete.

- In accordance with NEMA TC 6&8, ASTM F-512 Standard.
- Corrosion resistant.
- Impact resistant.
- Self extinguishing, fire resistant.
- Smooth interior and outside.
- Produced in standard 10' or 20' lengths with a belled end.

Item No.	Size	Average OD (inch)	Thickness 01 (inch)	Thickness 02 (inch)	Length
CT-DB120RCA	1	1.315±0.005	0.060	0.060	10ft/20ft
CT-DB120RCB	1-1/2	1.900±0.006	0.060	0.065	10ft/20ft
CT-DB120RCC	2	2.375±0.006	0.077	0.083	10ft/20ft
CT-DB120RCD	3	3.500±0.008	0.118	0.127	10ft/20ft
CT-DB120RCE	3-1/2	4.000±0.008	0.136	0.147	10ft/20ft
CT-DB120RCF	4	4.500±0.009	0.154	0.166	10ft/20ft
CT-DB120RCG	5	5.563±0.010	0.191	0.205	10ft/20ft
CT-DB120RCH	6	6.625±0.011	0.227	0.244	10ft/20ft

Dimensions are nominal



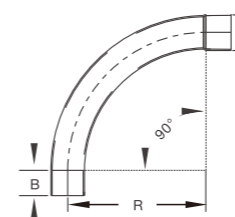
Sch40 & Sch80 90° Standard Elbows - Bell End



- Comply with UL651 standard.
- Bell end standard radius elbow is used to change the direction of a conduit run by 90 degrees.
- PVC material with great corrosion resistant.
- Sunlight resistant.



Item No.	Trade Size	Min.Wall (in)		A (in)	B (in)	R (in)
		Sch40	Sch80			
CT-SWB90A	1/2	0.109	0.147	0.84	1.5	4
CT-SWB90B	3/4	0.113	0.154	1.05	1.5	4.5
CT-SWB90C	1	0.133	0.179	1.315	1.875	5.75
CT-SWB90D	1-1/4	0.140	0.191	1.66	2	7.25
CT-SWB90E	1-1/2	0.145	0.200	1.9	2	8.25
CT-SWB90F	2	0.154	0.218	2.375	2	9.5
CT-SWB90G	2-1/2	0.203	0.276	2.875	3	10.5
CT-SWB90H	3	0.216	0.300	3.5	3.125	13
CT-SWB90I	3-1/2	0.226	0.318	4	3.25	15
CT-SWB90J	4	0.237	0.337	4.5	3.375	16
CT-SWB90K	5	0.258	0.375	5.563	3.625	24
CT-SWB90L	6	0.280	0.432	6.625	3.75	30
CT-SWB90M	8	0.322	0.500	8.625	6.5	35.5



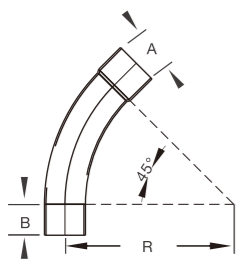
Sch40 & Sch80 45° Standard Elbows - Bell End



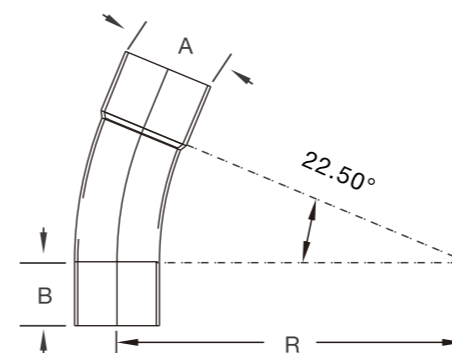
- Comply with UL651 standard.
- Bell end standard radius elbow is used to change the direction of a conduit run by 45 degrees.
- PVC material with great corrosion resistant.
- Sunlight resistant.



Item No.	Trade Size	Min.Wall (in)		A (in)	B (in)	R (in)
		Sch40	Sch80			
CT-SWB45A	1/2	0.109	0.147	0.84	1.5	4
CT-SWB45B	3/4	0.113	0.154	1.05	1.5	4.5
CT-SWB45C	1	0.133	0.179	1.315	1.875	5.75
CT-SWB45D	1-1/4	0.140	0.191	1.66	2	7.25
CT-SWB45E	1-1/2	0.145	0.200	1.9	2	8.25
CT-SWB45F	2	0.154	0.218	2.375	2	9.5
CT-SWB45G	2-1/2	0.203	0.276	2.875	3	10.5
CT-SWB45H	3	0.216	0.300	3.5	3.125	13
CT-SWB45I	3-1/2	0.226	0.318	4	3.25	15
CT-SWB45J	4	0.237	0.337	4.5	3.375	16
CT-SWB45K	5	0.258	0.375	5.563	3.625	24
CT-SWB45L	6	0.280	0.432	6.625	3.75	30
CT-SWB45M	8	0.322	0.500	8.625	6.5	35.5



Sch40 & Sch80 22.5° Standard Elbows - Bell End

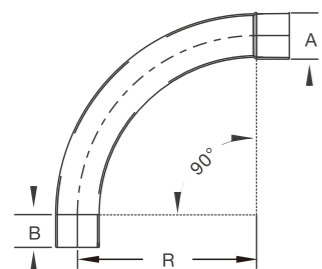


- Comply with UL651 standard.
- Bell end standard radius elbow is used to change the direction of a conduit run by 22.5 degrees.
- PVC material with great corrosion resistant.
- Sunlight resistant.



Item No.	Trade Size	Min.Wall (in)		A (in)	B (in)	R (in)
		Sch40	Sch80			
CT-SWB22.5A	1/2	0.109	0.147	0.84	1.5	4
CT-SWB22.5B	3/4	0.113	0.154	1.05	1.5	4.5
CT-SWB22.5C	1	0.133	0.179	1.315	1.875	5.75
CT-SWB22.5D	1-1/4	0.140	0.191	1.66	2	7.25
CT-SWB22.5E	1-1/2	0.145	0.200	1.9	2	8.25
CT-SWB22.5F	2	0.154	0.218	2.375	2	9.5
CT-SWB22.5G	2-1/2	0.203	0.276	2.875	3	10.5
CT-SWB22.5H	3	0.216	0.300	3.5	3.125	13
CT-SWB22.5I	3-1/2	0.226	0.318	4	3.25	15
CT-SWB22.5J	4	0.237	0.337	4.5	3.375	16
CT-SWB22.5K	5	0.258	0.375	5.563	3.625	24
CT-SWB22.5L	6	0.280	0.432	6.625	3.75	30
CT-SWB22.5M	8	0.322	0.500	8.625	6.5	35.5

Sch40 & Sch80 90° Special Sweep Elbows - Bell End



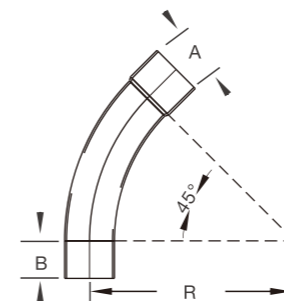
- Comply with UL651 standard.
- Bell end special radius elbow is used to change the direction of a conduit run by 90 degrees.
- PVC material with great corrosion resistant.
- Sunlight resistant.



Item No.	Trade Size	Min.Wall (in)		A (in)	Min. B	Radius	
		Sch40	Sch80			24"	36"
CT-SWS90C	1	0.133	0.179	1.315	1.875	✓	✓
CT-SWS90D	1-1/4	0.140	0.191	1.660	2.000	✓	✓
CT-SWS90E	1-1/2	0.145	0.200	1.900	2.000	✓	✓
CT-SWS90F	2	0.154	0.218	2.375	2.000	✓	✓
CT-SWS90G	2-1/2	0.203	0.276	2.875	3.000	✓	✓
CT-SWS90H	3	0.216	0.300	3.500	3.125	✓	✓
CT-SWS90I	3-1/2	0.226	0.318	4.000	3.250	✓	✓
CT-SWS90J	4	0.237	0.337	4.500	3.375	✓	✓
CT-SWS90K	5	0.258	0.375	5.563	3.625	✓	✓
CT-SWS90L	6	0.280	0.432	6.625	3.750	✓	✓
CT-SWS90M	8	0.322	0.500	8.625	6.500	✓	✓

Please contact for availability of other special radius.

Sch40 & Sch80 45° Special Sweep Elbows - Bell End



- Comply with UL651 standard.
- Bell end special radius elbow is used to change the direction of a conduit run by 45 degrees.
- PVC material with great corrosion resistant.
- Sunlight resistant.



Item No.	Trade Size	Min.Wall (in)		A (in)	Min. B	Radius	
		Sch40	Sch80			24"	36"
CT-SWS45C	1	0.133	0.179	1.315	1.875	✓	✓
CT-SWS45D	1-1/4	0.140	0.191	1.660	2.000	✓	✓
CT-SWS45E	1-1/2	0.145	0.200	1.900	2.000	✓	✓
CT-SWS45F	2	0.154	0.218	2.375	2.000	✓	✓
CT-SWS45G	2-1/2	0.203	0.276	2.875	3.000	✓	✓
CT-SWS45H	3	0.216	0.300	3.500	3.125	✓	✓
CT-SWS45I	3-1/2	0.226	0.318	4.000	3.250	✓	✓
CT-SWS45J	4	0.237	0.337	4.500	3.375	✓	✓
CT-SWS45K	5	0.258	0.375	5.563	3.625	✓	✓
CT-SWS45L	6	0.280	0.432	6.625	3.750	✓	✓
CT-SWS45M	8	0.322	0.500	8.625	6.500	✓	✓

Please contact for availability of other special radius.

Center Stop Coupling



- Comply with UL651, NEMA TC-3 standard.
- For use with schedule 40 and schedule 80 conduit.
- Center stop coupling used to join lengths of conduit pipe together with two solvent weld socket ends.
- PVC material with great corrosion resistant.
- Sunlight resistant.

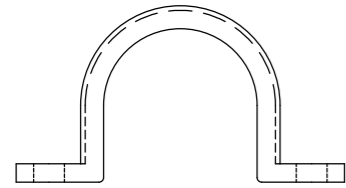
Item No.	Trade Size	W (in)	L (in)	ID (in)
CT-SCA	1/2	1.065	1.500	0.852
CT-SCB	3/4	1.307	1.563	1.064
CT-SCC	1	1.602	2.000	1.329
CT-SCD	1-1/4	2.019	2.165	1.677
CT-SCE	1-1/2	2.252	2.357	1.918
CT-SCF	2	2.744	2.600	2.393
CT-SCG	2-1/2	3.350	3.500	2.890
CT-SCH	3	4.035	3.875	3.515
CT-SCI	3-1/2	4.539	4.000	4.015
CT-SCJ	4	5.039	4.188	4.515
CT-SCK	5	6.168	5.375	5.593
CT-SCL	6	7.430	6.375	6.658
CT-SCM	8	9.315	8.346	8.669

Terminal Male Adapter



- Comply with UL651, NEMA TC-3 standard.
- For use with schedule 40 and schedule 80, Type EB applications.
- PVC material with great corrosion resistant.

Item No.	Trade Size	W(in)	L (in)
CT-PSAA	1/2	1.069	1.449
CT-PSAB	3/4	1.302	1.527
CT-PSAC	1	1.587	1.889
CT-PSAD	1-1/4	2.020	1.967
CT-PSAE	1-1/2	2.258	2.006
CT-PSAF	2	2.744	2.170
CT-PSAG	2-1/2	3.354	2.408
CT-PSAH	3	4.035	2.669
CT-PSAI	4	5.039	3.193

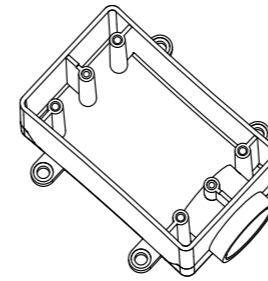


Conduit Clamps

- For use with Schedule 40 and Schedule 80 conduit.
- Non-conductive PVC material will not corrode.
- Sunlight resistant.

Item No.	Knockouts	L (in)	H (in)
CT-PSAA	1/2	2.188	0.500
CT-PSAB	3/4	2.500	0.500
CT-PSAC	1	2.813	0.563
CT-PSAD	1-1/4	3.125	0.622
CT-PSAE	1-1/2	3.374	0.622
CT-PSAF	2	4.001	0.687
CT-PSAG	2-1/2	4.563	1.000

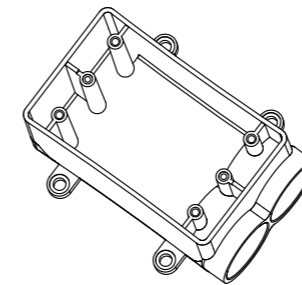
Single Gang Outlet Box 1 Way



- PVC material.
- Non-conductive.
- For use with schedule 40 and Schedule 80 conduit.
- Ideal for use in concrete.

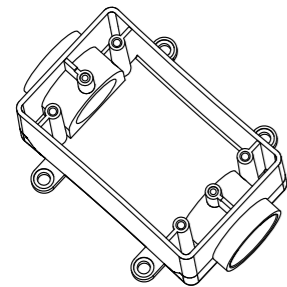
Item No.	Knockouts	L (in)	H (in)
CT-SGB1A	1/2	4.951	2.375
CT-SGB1B	3/4	4.951	2.375
CT-SGB1C	1	4.951	2.375

Single Gang Outlet Box 2 Way



- PVC material.
- Non-conductive.
- For use with schedule 40 and Schedule 80 conduit.
- Ideal for use in concrete.

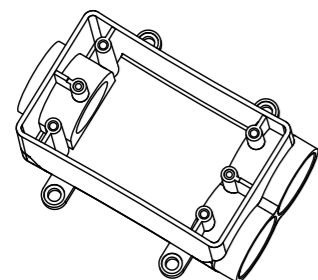
Item No.	Knockouts	L (in)	H (in)
CT-SGB2A	1/2	4.951	2.375
CT-SGB2B	3/4	4.951	2.375
CT-SGB2C	1	4.951	2.375



Single Gang Outlet Box 2 Straight Way

- PVC material.
- Non-conductive.
- For use with schedule 40 and Schedule 80 conduit.
- Ideal for use in concrete.

Item No.	Knockouts	L (in)	H (in)
CT-SGBS1A	1/2	5.311	2.375
CT-SGBS1B	3/4	5.311	2.375
CT-SGBS1C	1	5.311	2.375

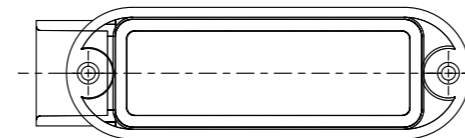


Single Gang Outlet Box 3 Way

- PVC material.
- Non-conductive.
- For use with schedule 40 and Schedule 80 conduit.
- Ideal for use in concrete.

Item No.	Knockouts	L (in)	H (in)
CT-SGB3A	1/2	5.311	2.375
CT-SGB3B	3/4	5.311	2.375
CT-SGB3C	1	5.311	2.375

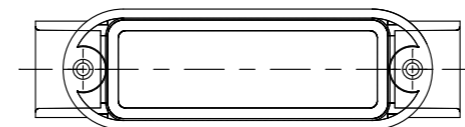
Conduit Bodies Type E



- For use with schedule 40 and Schedule 80 conduit.
- PVC material.
- Non-conductive.
- Lid, gasket, and screws included.

Item No.	Knockouts	L (in)	H (in)
CT-CBTEA	1/2	4.316	1.311
CT-CBTED	3/4	5.248	1.500
CT-CBTEC	1	6.259	1.752
CT-CBTED	1-1/4	7.976	2.500
CT-CBTED	1-1/2	8.610	2.626
CT-CBTEF	2	10.658	3.126

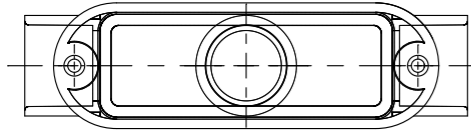
Conduit Bodies Type C



- For use with schedule 40 and Schedule 80 conduit.
- PVC material.
- Non-conductive.
- Lid, gasket, and screws included.

Item No.	Knockouts	L (in)	H (in)
CT-CBTCA	1/2	4.617	1.311
CT-CBTCE	3/4	5.693	1.500
CT-CBTCC	1	6.828	1.752
CT-CBTCD	1-1/4	8.628	2.500
CT-CBTCE	1-1/2	9.346	2.626
CT-CBTCE	2	11.454	3.126

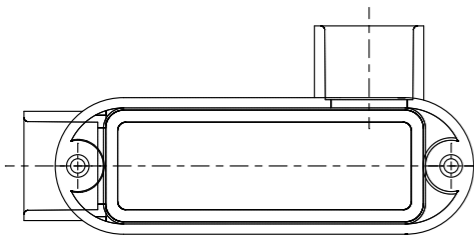
Conduit Bodies Type TB



- For use with schedule 40 and Schedule 80 conduit.
- PVC material.
- Non-conductive.
- Lid, gasket, and screws included.

Item No.	Knockouts	L (in)	H (in)
CT-CBTTA	1/2	4.617	1.311
CT-CBTTB	3/4	5.693	1.500
CT-CBTTC	1	6.828	1.752
CT-CBTTD	1-1/4	8.628	2.499
CT-CBTTE	1-1/2	9.346	2.626
CT-CBTTF	2	11.454	3.126

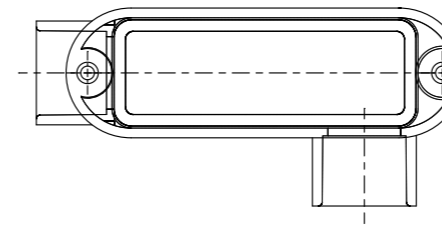
Conduit Bodies Type LL



- For use with schedule 40 and Schedule 80 conduit.
- PVC material.
- Non-conductive.
- Lid, gasket, and screws included.

Item No.	Knockouts	L (in)	H (in)
CT-CBTLA	1/2	4.316	1.311
CT-CBTLB	3/4	5.248	1.500
CT-CBTLC	1	6.259	1.752
CT-CBTLD	1-1/4	7.976	2.500
CT-CBTLE	1-1/2	8.610	2.626
CT-CBTLF	2	10.658	3.126

Conduit Bodies Type LR



- For use with schedule 40 and Schedule 80 conduit.
- PVC material.
- Non-conductive.
- Lid, gasket, and screws included.

Item No.	Knockouts	L (in)	H (in)
CT-CBTRA	1/2	4.316	1.311
CT-CBTRB	3/4	5.248	1.500
CT-CBTRC	1	6.259	1.752
CT-CBTRD	1-1/4	7.976	2.500
CT-CBTRE	1-1/2	8.610	2.626
CT-CBTRF	2	10.658	3.126



Electrical Nonmetallic Tubing

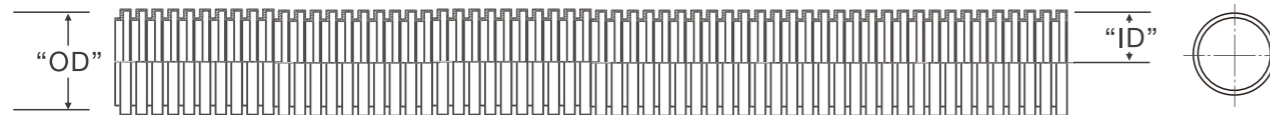
Ctube flexible corrugated pvc conduit is designed for electrical applications, which is exceeding flexibility and reduces installation time and cost.

- UL and CUL listed.
- Comply with UL1653 and CSA C22.2 No. 227.1.
- PVC material which is corrosion resistant.
- Hand-bendable.
- Impact resistant.
- Self extinguishing, fire resistant.
- FT 4 rated.
- Concrete tight.
- Colors in Blue, Red and Yellow are available, or customized.
- By coil or by reel or by length.

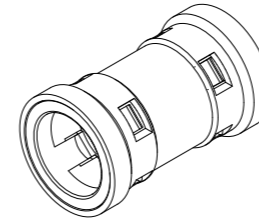


Item No.	Size	Average OD		Min Average ID	
		Inches	mm	Inches	mm
CT-ENTA	1/2	0.840	21.34	0.602	15.29
CT-ENTB	3/4	1.050	26.67	0.804	20.42
CT-ENTC	1	1.315	33.40	1.029	26.14
CT-ENTD	1-1/4	1.660	42.17	1.360	34.55
CT-ENTE	1-1/2	1.900	48.26	1.590	40.39
CT-ENTF	2	2.375	60.36	2.047	51.99
CT-ENTG	2-1/2	2.866	72.80	2.469	62.70

Dimensions are nominal



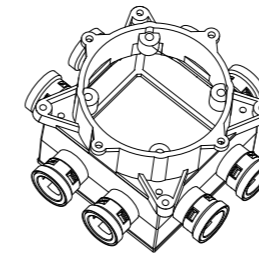
ENT Coupling



- PVC material.
- Non-conductive, impact and corrosion resistant.
- Concrete tight.

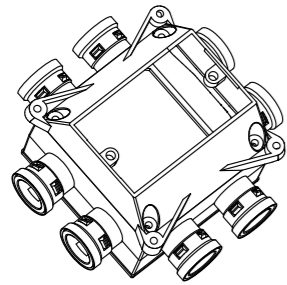
Item No.	Knockouts	L (in)	H (in)
CT-ECA	1/2	1.988	1.213
CT-ECB	3/4	2.047	1.417
CT-ECC	1	2.343	1.764

Standard Slab Box



- Support of ceiling fans up to 35 lbs. and luminaries up to 50 lbs.
- PVC material. Non-conductive, impact and corrosion resistant.
- Concrete tight.

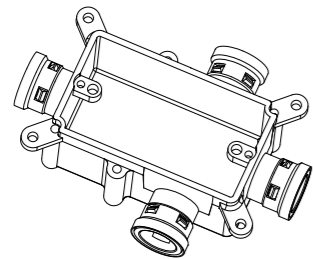
Item No.	Knockouts	L (in)	H (in)
CT-ESRBA	8X1/2	6.00	3.587
CT-ESRBB	8X3/4	6.00	3.587
CT-ESRBC	4X1/2, 4X3/4	6.00	3.587
CT-ESRBD	4X1/2, 2X3/4, 2X1	6.00	3.587
CT-ESRBE	4X3/4, 4X1	6.00	3.587



Deep Concrete Wall Box

- PVC material.
- Non-conductive, impact and corrosion resistant.
- Concrete right.

Item No.	Knockouts	L (in)	H (in)
CT-ESSBA	8X1/2	6.00	3.587
CT-ESSBB	8X3/4	6.00	3.587
CT-ESSBC	4X1/2, 4X3/4	6.00	3.587
CT-ESSBD	4X1/2, 2X3/4, 2X1	6.00	3.587
CT-ESSBE	4X3/4, 4X1	6.00	3.587



Shallow Concrete Wall Box

- PVC material.
- Non-conductive.
- Ideal for use in concrete.

Item No.	Knockouts	L (in)	H (in)
CT-ECWBA	1/2	6.24	2.008
CT-ECWBB	3/4	6.24	2.008
CT-ECWBC	1	6.24	2.008